

KUTANDIKA KWEGHA KUSOMA LUBWISI

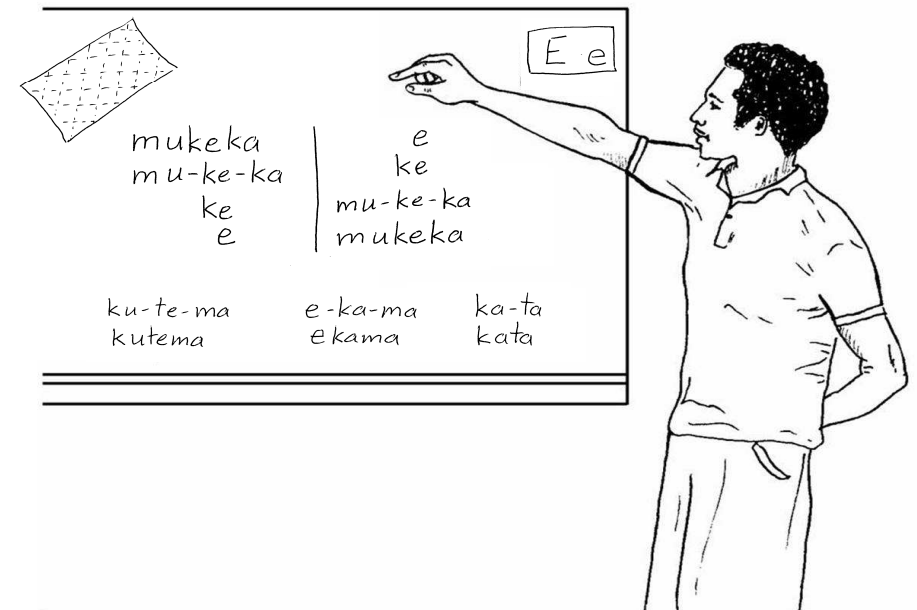
KITABO 2



*Partners in
Language Development*

ISBN: 978 - 9970 -719 -07- 5

Ush 1200/=



Lubwisi

P1 T2 Reader 2

MPANDIIKA YA BIGHAMBO

- Esomo lya 1** k, a - ka, aka, kakaka, kaka
- Esomo lya 2** m — maka, makama, mata, kaka, aka, kakaka, kata, kakama
- Esomo lya 3** t - mata, matama, kata, tata, kaka, makama
- Esomo lya 4** a - matama, mata, kata, kaka, makama, ka, kakaka
- Esomo lya 5** u - kumuka, kakaka mukama, mata, kukama, kakama, kuta
- Esomo lya 6** e - ekama, mukeka, kutema, kuta, mukama, kukama
- Esomo lya 7** l - lula, kuluka, kutema, mululu, kuta, makala, maka, mukama, mata, matama
- Esomo lya 8** u - mukama, kumuka, mutuku, mukeka, lula, maka, mululu, kukama, kuluka, makala
- Esomo lya 9** n - ntale, kumuka, ntula, mukeka, nte, maka, ntema, mululu, kuluka, matama
- Esomo lya 10** s - kususa, nseku, mukama, kuseka, ntale, kusasa, nte, kuluka, kaseke, makala
- Esomo lya 11** i - kikusa, nseku, nte, tita, mikeka, kukama, misaka, kuluka, ntale, kumuka
- Esomo lya 12** i - mukila, musili, kikusa, tita, mutima, maka, kaseke, mukama, kuta, mukeka

KUTANDIKA KWEGHA KUSOMA LUBWISI KITABO 2

LEARNING TO WRITE AND READ LUBWISI BOOK 2

Written by: Charles Musingizi, Bishop Hannington Bahemuka,
Mary Tabb, SIL

Illustrations from: International Illustrations The Art of Reading
2.0 © 2001 SIL International.

Lubwisi

Trial Edition
September, 2009
300 Copies

ISBN: 978 - 9970 -719 -07- 5

Produced in cooperation by:

© Kwamba/Lubwisi Development Association
c/o P.O. Box 1124
Bundibugyo, Uganda
and
© SIL International
P.O. Box 750
Entebbe, Uganda

Kwanjula

Kusighikila haa kilaghilo kya kyabyenjegheesiya haa kusomela mumubughe ghwawe, kini nkitabo nkya 6 mu kitongole kya byenjegheesiya na migyano.

Basomi bakugubha kukisoma mubwile obu Litalase ekwete kwegheseliyamu nakukilamunu kitebe kyokubanja na kitebe kya kabili mu maasukuulu ghaa baana.

Beegheesiya balubwisi babhonganuuwe kumala wiiki emui haa buli esomo. Sipeelingi na bighambo byakubugha mbahandiika bili eenuma syomusomi mu kitabo kini.

Milingo ya njegheesiya ya beeghesa kwegheseliyamu masomo ghani, ekaniye kimui kandi eliyo. Beeghesa boona abakubbala kwegheesiya mulingo ghwa kusoma na kuhandiika Lubwisi, babhonganuuwe badhubhe batunge bhaluwa ya Lubwisi eghi ekwoleka ngu bamaniye kusoma nakuhandiika Lubwisi kulungi.

Noobbala kumanya bikaniye haa bikwetó mulingo ghwa kusoma Lubwisi, oikoho Rev. Timothy Bandirana Litalase kodineeta wa mubughe ghwa Lubwisi haa simo eni +256-782-611-496

Babwisi bakuukalagha mu Disitulikiti ya Bundibughiyo na bicweka bya Butalinga na Oitcha – Beni Congo. Bahikiye nga mitwalo 300,000 abakubughagha Lubwisi

Preface

In accordance with the Mother Tongue Education policy of the Uganda Ministry of Education and Sports, this book is one of 6 Readers which can be used during the literacy hour time in Primary 1 and Primary 2 of schools for children. Babwisi teachers should spend 1 week on each lesson. Spelling dictation words are in the back of the Reader.

A Multi-Strategy Economy Model Teacher's Guide for how to teach these Reader lessons is available. All teacher's who want to teach others how to read and write in Lubwisi should first of all obtain their Fluency Certificate in Lubwisi and then be trained as basic Lubwisi literacy teachers. For information on teacher training, contact Timothy Bandirana, Literacy Coordinator for the Lubwisi Language Project. +256-782-611-496

The Bwisi people are located in the Bundibughiyo District of Uganda, East Africa. There are about 100,000 Lubwisi speakers.



I	i
---	---

musili	i
mu-si-li	si
si	mu-si-li
i	musili

mu	ti	ma	a
ku	si	la	ka
nu	li	sa	ta
su	ki	se	te

mu-si-li	a-ti	mu-ki-la
musili	ati	mukila
ki-ku-sa	a-ka-li	mu-ti-ma
kikusa	akali	mutima



Musili

Musili ghwa Kabasom̄i, mukaa L̄imengo,
ghulimu bilimuwa bya milingo-lingo. Bilungi,
mukaa Kahumba, ahel̄iye mukusa na bikoole
mu musili ghuwe. Baabal̄iye baabo
bakaakuh̄ikagha mu misili eghi
badheedhuwa haabwa kusemela kway'o.

B̄ibuuliyo

1. Musili ghwa Bilungi gulimu biki?
2. Kuhela bilimuwa kikukukoonela kutiya?

Masomo aghali mu Kitabo Kini

	Nuguta	Bighambo
1	k, a	ka
2	2 m	maka
3	t	kata
4	a *	kakaka
5	u	kukama
6	e	mukeka
7	l	lula
8	u *	mukama
9	n	nte
10	s	nseku
11	i	kikusa
12	i *	musili
13	o	kimole
14	b	bulili
15	gh	munagha
16	o *	nkoko
17	h	muholo
18	aa	baana
19	ny	nyama
20	aa *	ntaama
21	u	nsuka
22	i	kitibo
23	i *	etimu



Ka

Limengo na Kahumba, owaanina wee,
baakaaye ka emui. Ka eghi esemeeye. Elimu
baana, bitunguwa na misili.

Bibuuliyo

1. Ka ya Limengo na Kahumba elimu biki?
2. Ka eghi esemeeye elimu biki?



I i

kikusa	i
ki-ku-sa	ki
ki	ki-ku-sa
i	kikusa

ki	ku	e	li
ti	ka	me	mi
ta	sa	ke	ni
te	se	ki	n

ki-ku-sa
kikusa

ki-ti
kiti

ti-ta
tita

mi-ke-ka
mikeka

e-ki
eki

mi-sa-ka
misaka

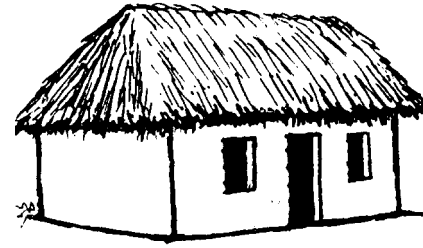


Kikusa

Bilungi, mukaa Kahumba, akuhelagha mukusa milundi ebili buli mwaka nanga kikusa kinuliye. Baana baabo babbaliye kuliya kikusa ghwokeeye. Bilungi akuukalagha abiikiye nsigho ya bikusa.

Bibuuliyo

1. Mukaa Kahumba liina liye niiye ani?
2. Bantu bakuhelagha mukusa nangaaki?



K	k
A	a

ka		a	ka		k
a		ka	k		ka

a	ka	a
ka	a	ka
a	ka	a

a-ka
aka

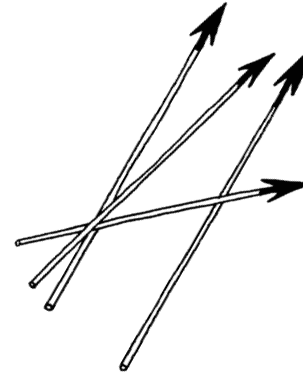
ka-ka
kaka

ka-ka-ka
kakaka



Maka

Limengo na Paulo, waanina wee onji, bali na maka. Maka ghaabo agha ni ghayonjo, nanga ghalimu byaloonj bisemeeye kandi bakunuwagha maasi ghasemeeye.



nseku	s
n-se-ku	se
se	n-se-ku
s	nseku

S	s
---	---

n	ka	se	sa
na	a	ke	ka
ma	sa	ku	ta
la	su	lu	te

n-se-ku
nseku

ku-sa-sa
kusasa

ku-se-ka
kuseka

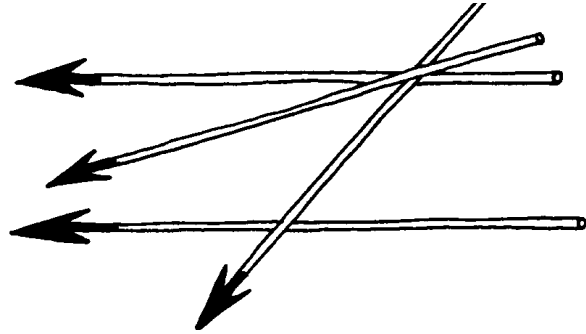
mu-sa-sa
musasa

ka-se-ke
kaseke

ku-su-sa
kususa

Bibuuliyo

1. Maka gha Limengo na Paulo ghalimu biki?
2. Ewaanu mukutahagha haa maasi ghaa kunuwa?
3. Maasi ghali na mughaso ki mu maka?



Nseku

L̄imengo amaniye kubhasula nseku sisombeeye. L̄imengo akubhaakagha kandi as̄im̄iis̄iya kusemeeye nseku siye. Nseku sya L̄imengo tasitaasiya. Nseku siye ek̄um̄i ni būnon̄i ek̄um̄i.

Bibuuliyo

1. L̄imengo akubhasula biki?
2. Nseku bakusiiyagha mu biti bya mulingo ki?



M m

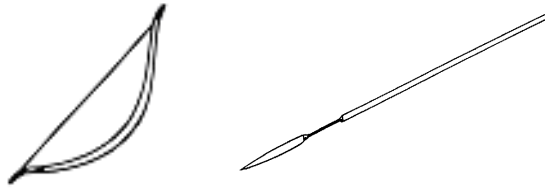
maka	m
ma-ka	ma
ma	ma-ka
m	maka

ma	ka	a
ka	a	ma
a	ma	ka

ma-ka
maka

ka-ka-ka
kakaka

ma-ka-ma
makama

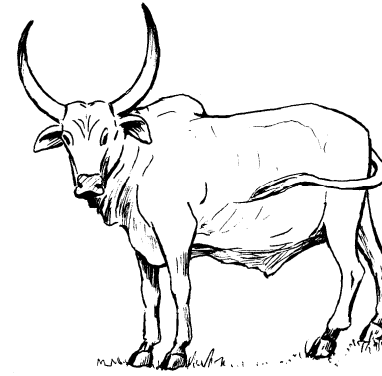


Kata

Paulo na Limengo bakeeghomoolela mata ghabo kughenda kuhigha nkunga. Paulo aabhasula kata ke, aataasiya nkunga. Limengo naye aabhasula buta buwe, aaghilasa.

Bibuuliyo

1. Limengo akalasiya ki nkunga?
2. Ni bintu ki bahiighi bakukoleesiyagha?



N n

nte

n-te

n

n-te

e	ma	tu	n
ne	la	ta	na
le	ta	te	ka

n-te

nte

e-na

ena

n-te-ma

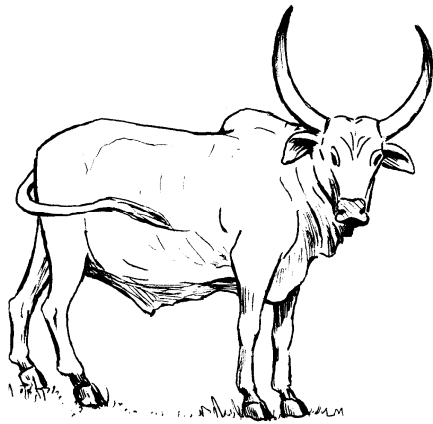
ntema

n-ta-le

ntale

n-tu-la

ntula

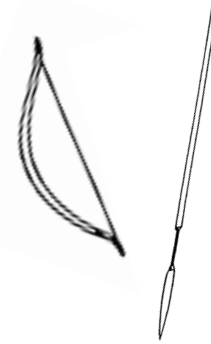


Nte

Kahumba akusuubulagha nte Butuku,
kandi akusisalilagha Nyahuka. Kahumba
akughuliyagha nyama syona noo, kusa eye
aliya bilenge! Akubbalagha atunge maghobo
ghakaniye.

Bibuuliyo

1. Nte bakusisalilagha haa?
2. Ewaanu mukusuubulagha biki?
3. Nte sili na mughaso ki?



T	t
---	---

kata	t
ka-ta	ta
ta	ka-ta
t	kata

ta	ka	ma
ma	a	ta
ka	ta	a

ka-ta
kata

ma-ta-ma
matama

ma-ta
mata

ta-ta
tata



Kakaka

Kakaka kaa kyamaji kanuliye. Baana baa
Limengo babbaliye munu kuliya bikaka.
Mamba wabo abiheliye. Akubaleetelagha
biyo milundi ebili buli wiiki.

Bibuuliyo

1. Baana baa Limengo bakubbalagha kuliya biki?
2. Bikaka bakubihelagha batiya?



mukama	u
mu-ka-ma	mu
mu	mu-ka-ma
u	mukama

U	u
---	---

mu	ta	le	lu
ku	ma	la	tu
ke	ka	a	te

mu-ka-ma
mukama

ku-ta
kuta

ku-mu-ka
kumuka

mu-ke-ka
mukeka

mu-lu-lu
mululu

ku-ka-ma
kukama

Mukama

Kahumba niye mukama wa mubhili ghwabo nanga niye aahaaye bantu bakaniye haa mubhili oghu bibanja. Kahumba ni mukama mulungi nanga akuhanuulilagha bantu be bintu bisemeeye. Mukama ni muntu wa maani nanga akulemagha bantu bakaniye.



A a

kakaka	a
ka-ka-ka	ka
ka	ka-ka-ka
a	kakaka

ma	ka	a
ka	ta	ma
a	ma	ta

ka-ka-ka
kakaka

ma-ta
mata

ma-ka-ma
makama

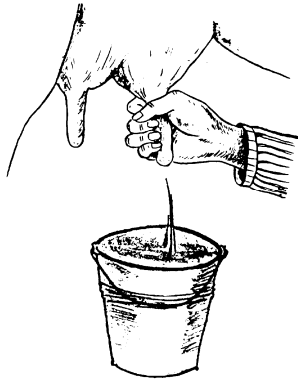
ka-ka-ma
kakama

ta-ta
tata

ma-ta-ma
matama

Bibuuliyo

1. Mukama Kahumba akaha ki bantu bakaniye haa mubhili oghu?
2. Bakama bakukolagha milimo ki?

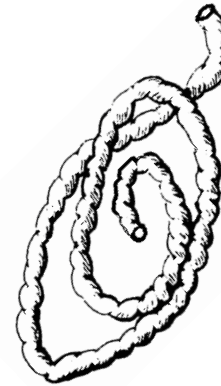


Kukama

Limengo akukamagha nte yee. Kukama ni mulimo ghudhootiye. Mata ghali na kiliisiya kikanjiye. Baana be bali na maani nanga bakunuwagha mata.

Bibuuliyo

1. Ni biki bilekiye baana baa Limengo bali na maani?
2. Tukutunga mughaso ki mu kunuwa mata?



lula		l
lu-la		lu
lu		lu-la
l		lula

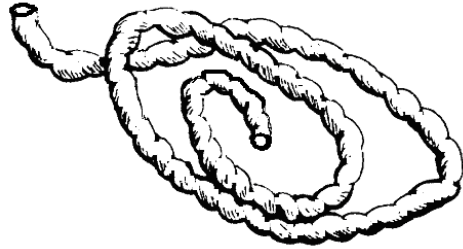
lu	ka	mu	la
la	ku	tu	le
ma	tu	te	lu

lu-la
lula

ma-ka-la
makala

mu-lu-lu
mululu

ku-lu-ka
kuluka

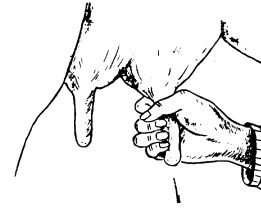


Lula

Lula lwa mbuli talwengaane na lwa nte. Limengo eso aasaliye mbuli ebili. Ngonji, mwana wa Kahumba, aaliye mala gha mbuli syombi. Baana baa Limengo kulugha haa sukuulu, baasangiye Ngonji naaliye mala gha mbuli esi syombi.

Bibuuliyo

1. Limengo aasaliye biki eso?
2. Ngonji aaliye ki?
3. Ni biki binji ebili na mala?



U u

kukama

u

ku-ka-ma

ku

ku

ku-ka-ma

u

kukama

ku	ma	ka
ka	mu	ta
ta	tu	a

ku-ka-ma

ku-mu-ka

mu-ka-ma

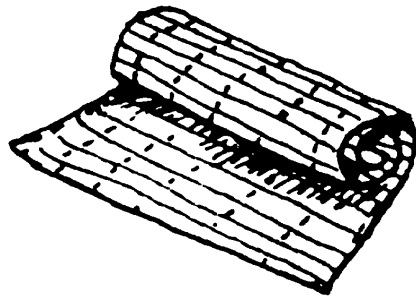
kukama

kumuka

mukama

ku-ta

kuta

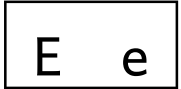
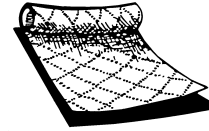


Mukeka

Kabasomi, mukaa Limengo, amaniye kuluka mukeka. Mukeka ghuwe ghulimu langi mutuku. Mukeka oghu akwete kuluka ni ghunamulito. Mikeka eghi akaakughilukagha aghighuliya. Sente asisasulamu sukuulu fiji ya baana. Kuluka mukeka ni mulimo ghusemeeye.

Bibuuliyo

1. Mukeka ghwa Kabasomi ghulimu langi esusiye etiya?
2. Mukeka bakughulukiyagha biki?
3. Mukeka ghuli na mughaso ki?



mukeka	e
mu-ke-ka	ke
ke	mu-ke-ka
e	mukeka

e	ka	mu	ma
ke	ma	ku	ka
te	a	u	ta

mu-ke-ka
mukeka

ku-te-ma
kutema

e-ka-ma
ekama